



OneOcean

Meeting the challenges of siloed data

The OneOcean approach to empower voyage
management decisions with the power of data

Laurence Dockley

OneOcean Account Manager

7th March 2023



Who We Are

OneOcean is the largest global supplier of voyage solutions for the maritime industry. Our innovative and effortlessly integrated software enables holistic voyage decision-making through better data visibility, consolidated workflows and dynamically linked data.





The Challenge: Voyage planning with disconnected data

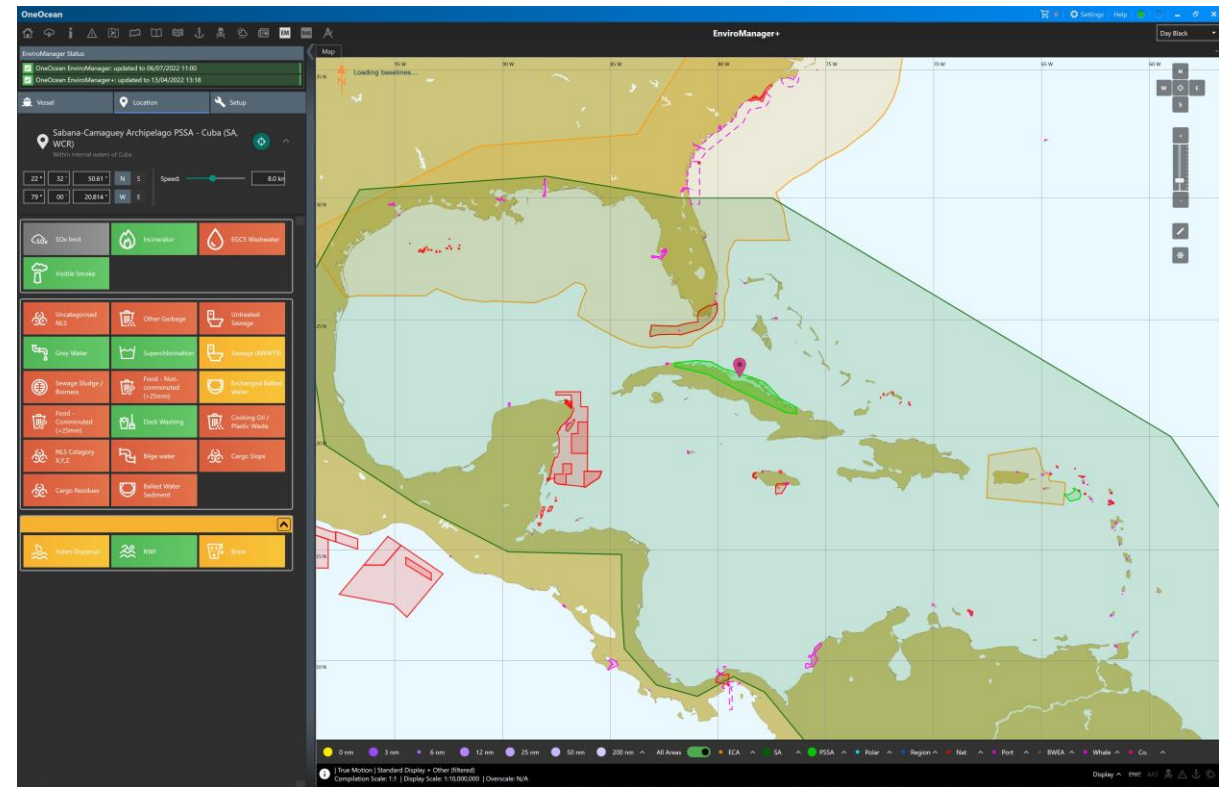
Gathering data pre voyage to determine viable routes

- Vessel – equipment, laden, routing systems, safety management systems
- Scenario – forecasted weather, NavArea warnings, Environmental zones, piracy if applicable
- Commercial – fuel consumption, speed, scheduling, cargo requirements

Collating this information and evaluating it for effective decision making is a *complex and time-consuming task*

The Challenge: Applying environmental regulations to voyage operations

- Increasing number of regulations and restrictions in place
 - Vessel type
 - Equipment
 - Systems
 - Cargo
 - Location
- How can we ensure that every vessel is complying with every applicable regulation during their voyage?
- Can we be confident in that?



The screenshot displays the Reg4Ships OneOcean web application. At the top, there is a search bar with the text "Index Search over 50,000 documents". Below the search bar, the interface is divided into several sections:

- Popular Links:** A list of frequently accessed documents including SOLAS (IMO), MARPOL (IMO), STCW (IMO), Other Conventions (IMO), Codes (IMO), Anti-Piracy (Anti-Piracy), PSC (International), and Code of Safe Working Practices for Merchant Seafarers (CoSWP) (UK).
- Recently Viewed Documents:** A list of documents that have been recently viewed, including various editions of the International Maritime Dangerous Goods (IMDG) Code and the EmS Guide.
- Favourites:** A section for marking documents as favourites, with sub-sections for IMO, Cyber Security, Fire, and Covid-19 Documents.
- Latest Updates:** A table of recent updates with columns for "Details" and "Last Updated".

Details	Last Updated
ItORo No. 24 - Ban on the use of Asbestos on board Ships (Version 2) Netherlands National Instruments (Nii)	19 July 2022
Seagoing Industry Award 2020 (Rev. 07/22-2) Australia Miscellaneous	19 July 2022
202228 - ReCAAP ISC Weekly Report 12 July 2022 - 18 July 2022 Anti-Piracy Reports and Guides	19 July 2022
Marine Advisory Note 19-2022 - Hazards of Fumigation using Phosphide onboard Dry Bulk Cargo Vessels Liberia Advisories	19 July 2022
FAL2/Circ.133 - List of Certificates and Documents Required to be Carried on Board Ships, 2022 IMO Circulars Facilitation of International Maritime Traffic (FAL)	18 July 2022
MEPC.1/Circ.902 - List of Certificates and Documents Required to be Carried on Board Ships, 2022 IMO Marine Environmental Protection Committee (MEPC)	18 July 2022
MSC.1/Circ.1646 - List of Certificates and Documents Required to be Carried on Board Ships, 2022 IMO Maritime Safety Committee (MSC)	18 July 2022
MG-02-13-08 - Guidance on the Application of MARPOL ANNEX II to Offshore Support Vessels (Rev. 07/22) Marshall Islands Guidelines	18 July 2022
MIN-008/2022 - Special Program of Flag Inspections for Ships Arriving at Ports in the United States (U.S.) Panama Marine Notices	18 July 2022
MGN 645 (M) - Load Line Length: Policy Clarification - Hull Form Cut-Outs, Extensions and Steps UK Marine Guidance Notes (MGNs)	18 July 2022
MMC-161 - Voyage Data Recorder (VDR) and Simplified Voyage Data Recorder (S-VDR) Annual Test (Rev. 07/22) Panama Circulars	15 July 2022
Circular Letter No. 4594 - Communication from the Government of the	15 July 2022

The Challenge: Wider regulatory requirements

- Vast array of regulations vessels must adhere to:
 - IMO regulations – MARPOL, SOLAS, COLREG, IMDG
 - Flag state, class, cargo, location
- Sourcing applicable regulations
- Interpreting how regulations affect the voyage and operations
- Time consuming and prone to human error



The Problem: Disconnected Data

Whilst there are some connections between data today, there are many data sets that are not connected due to organizational gaps, technological barriers and even a cultural resistance to sharing.

The Result:

- Siloed Decisions
- Inefficient Operations
- Miscommunication
- Increased Risk and Cost
- Reduced Quality

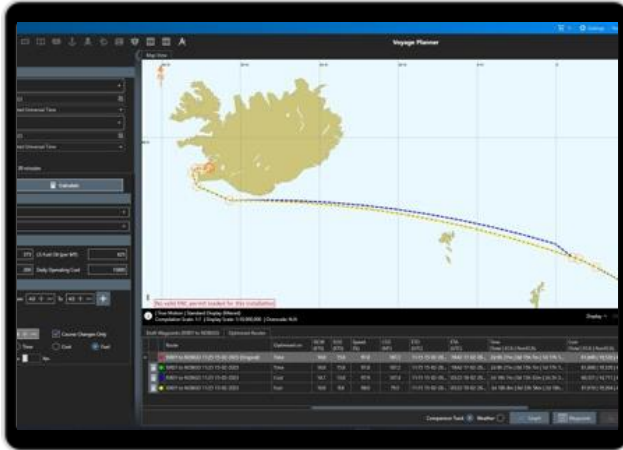


The Solution: Total Voyage Approach

We believe in a Total Voyage approach that unites data, processes and workflows to create a flexible and easy to use platform for appraisal, planning, reporting and monitoring.

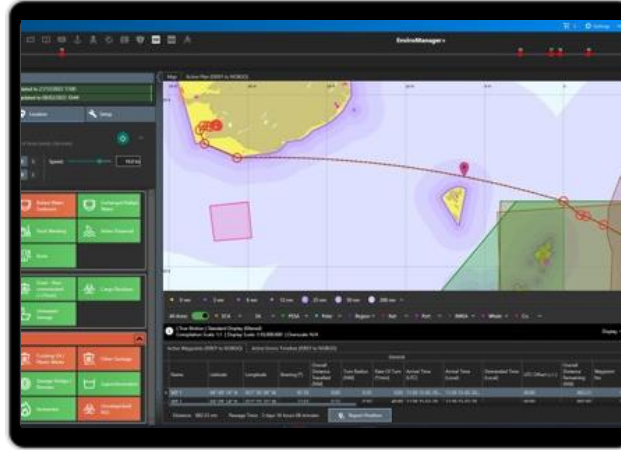
- **Unify** – Consolidate internal and external data for clarity
- **Simplify** – Use integrated data in a common workflow for easier process completion
- **Adapt** – Flexibility to react to changing conditions
- **Inform** – Clear visibility and context for compliant decision-making

Meeting the Challenges of Siloed Data



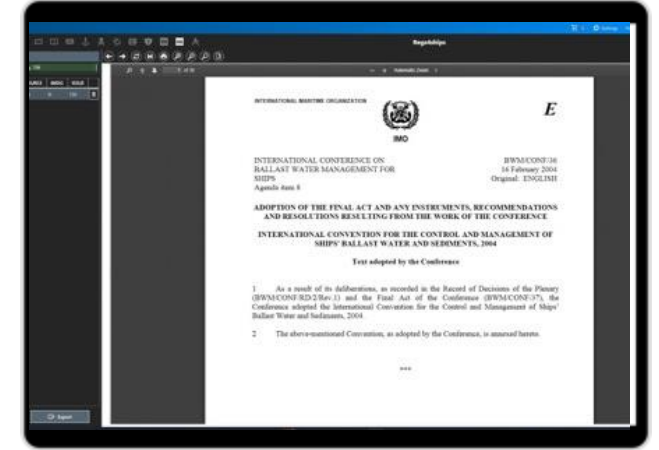
Voyage Planning

- Create port to port voyage plans complete with all required digital chart & publication data, Weather data, NavArea warnings & port information



Environmental Compliance

- Overlay environmental data over the voyage plan to ensure understanding of environmental challenges to strengthen overall compliance



Regulation Compliance

- Following the understanding of the environmental challenges, real time access both ship and shore side to accompanying regulatory content stipulating the environmental data sets



OneOcean

Laurence Dockley Account Manager

+44 1992 805 515

+44 7467 717 496

Laurence.dockley@oneocean.com

7th March 2023

